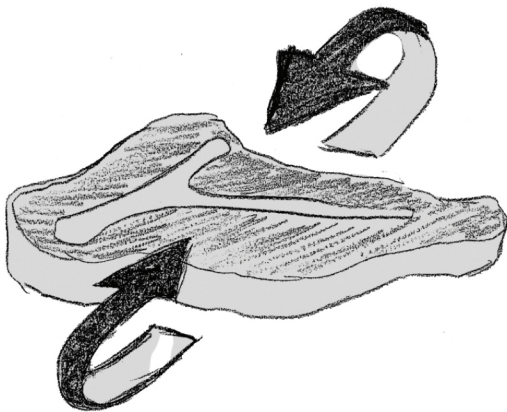


TENERIFE VEPA A4 INSTRUCTIONS FOR USE



1 – Grip the **TENERIFE VEPA A4** as shown on the illustration and give the necessary strokes, by pressing the machine on the piece of meat making the blades exit, until you reach the correct tenderizing condition.



2 – When one side of the meat has been tenderized, if necessary, turn the piece of meat and proceed as point.1.